

GERDA Construction & Integration Session Summary

Monday, Feb 18, 14:30 – 16:00

slow control
WT, heater, cryostat
GERDA building

Tuesday, Feb 19, 14:30 – 16:00

electronic readout chain
installation issues
near future

K.T.Knöpfler
MPI Kernphysik, Heidelberg
ktno@mpi-hd.mpg.de

GERDA Collaboration Meeting at Cracow
18 - 20 February 2008

14:30 – 14:35 Final statement on water purification system

- ▶ Borexino water to be used for filling (install connecting pipe)

14:35 – 15:00 Slow control

14:35 – 14:45 slow control of lock - M. Kästle

14:45 – 15:00 evaluation of slow control questionnaire – A.Garfagnini

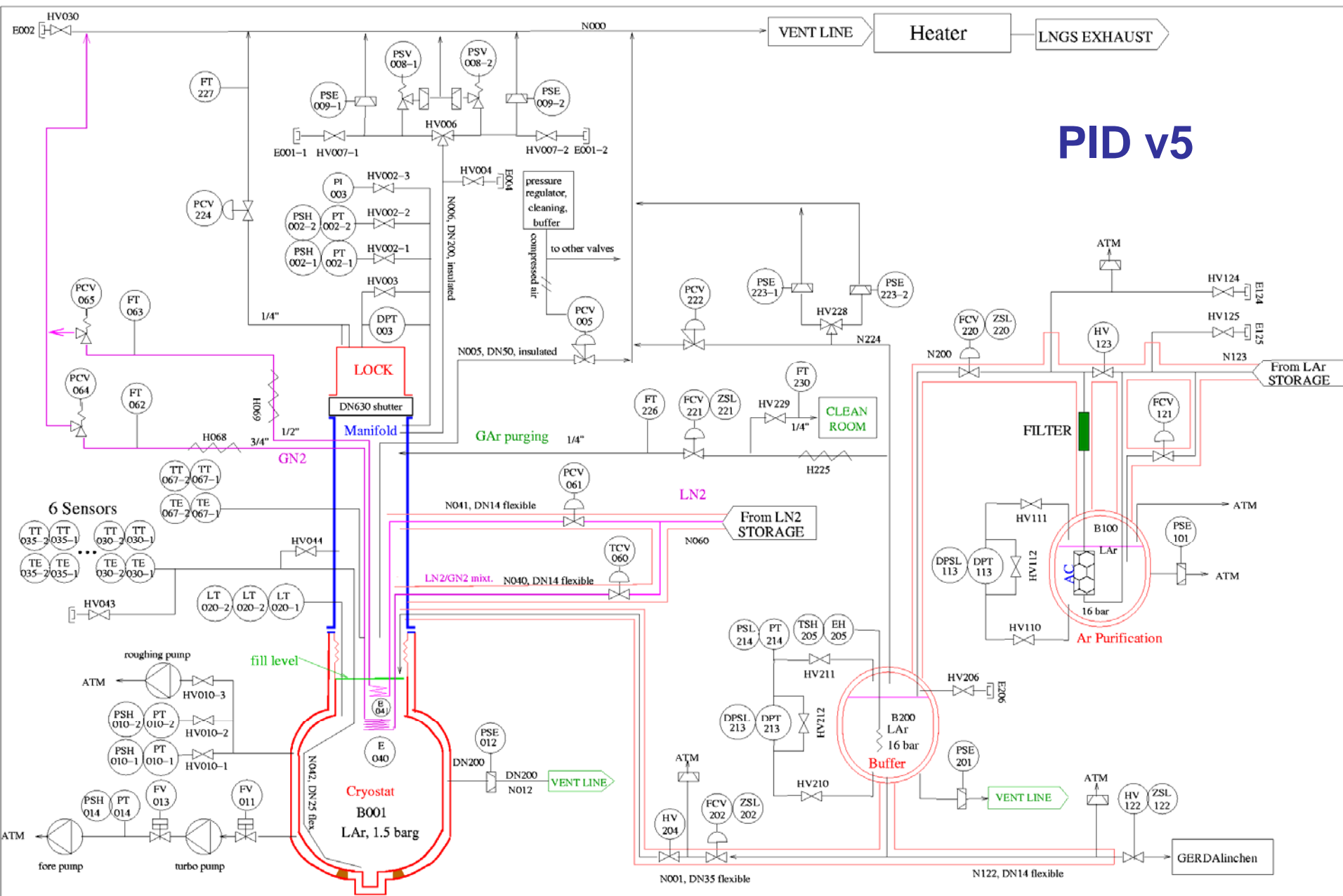
- ▶ great start – detailed definition to be finalized (db fixed)
issues discussed, e.g.:

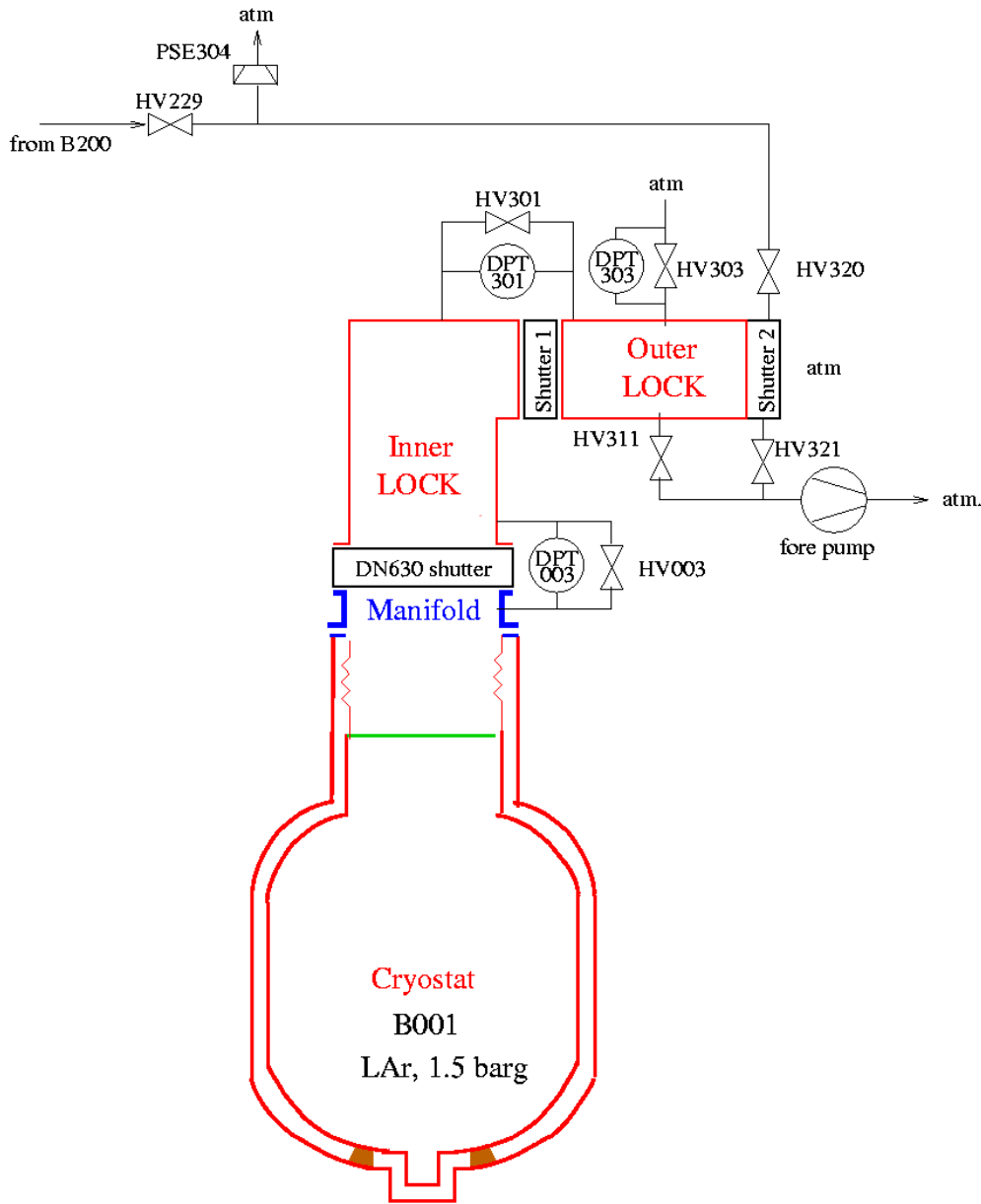
- fast run control vs slow control – architecture
- standardization of soft- & hardware interfaces
- ‘remote control’ of almost all components
- shift operation

- ▶ more detailed input needed from all groups
- ▶ sample hardware from each group needed for system developm.
- ▶▶ dedicated meeting soon !
- ▶ safety relevant interface to LNGS not part of slow control

– 15:20 PIDs for cryostat and lock

PID v5





PID for lock

OK !

15:20 – 15:40 WT, heater, cryostat

heater implications for WT, tubing, UPS, water purifications

- ▶ need final decision on capacity and type of heater

access to manifold & **chimney**

- ▶ provide steps, and platforms on WT roof !

Rn tight connection cryostat – WT ▶ Carla

15:40 – 16:00 GERDA building

next to last iteration of floor plan & room assignment

- ▶ Fig. / UPS : Do we need our own hi-rel system?

full access to ground floor (heater, Rn monitor)

- ▶ demountable stairs & walls (Matthias) !

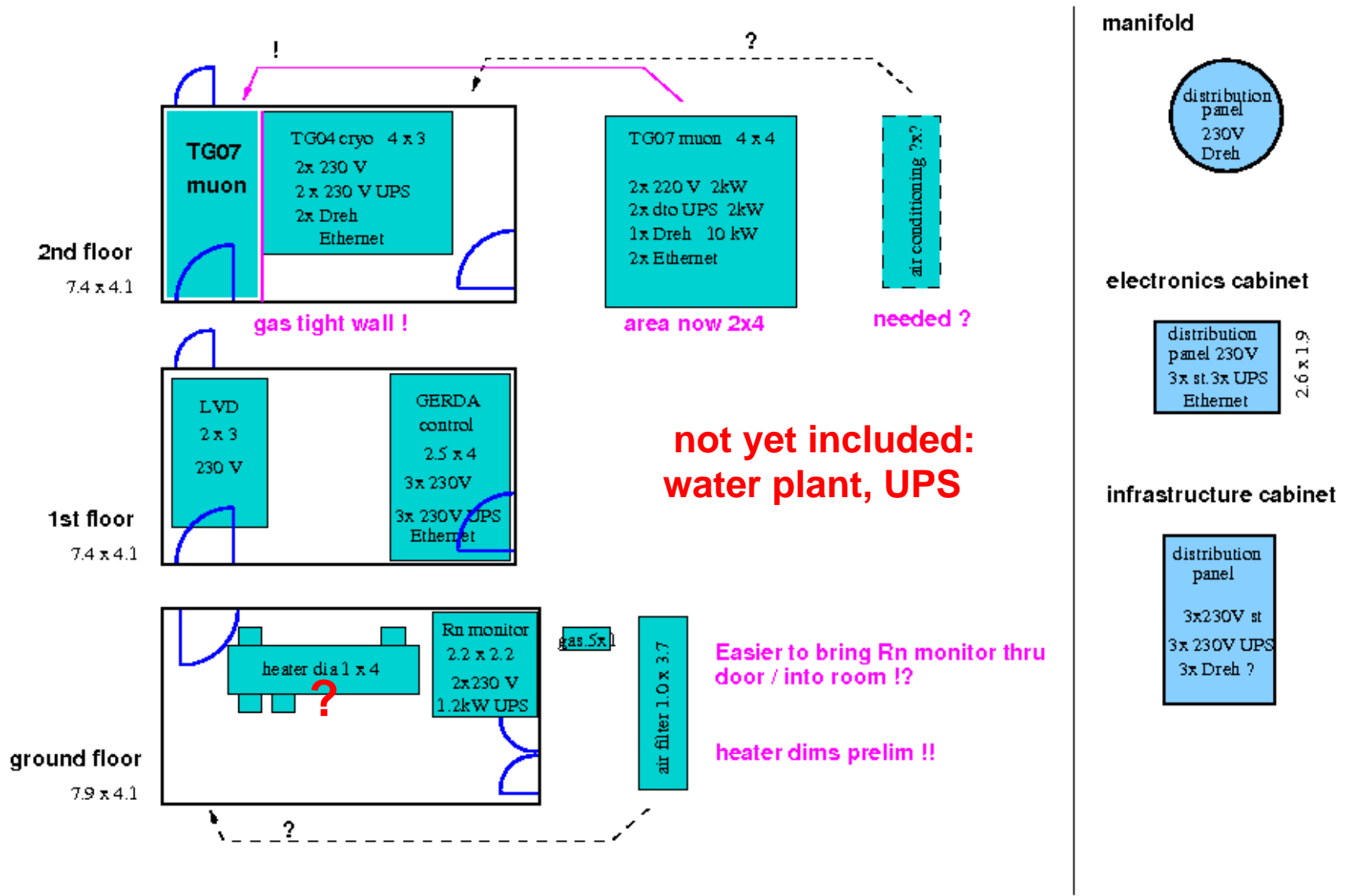
electronic cabinet

- ▶ Bernhard will take care of it,
- ▶ air/water cooling: Matthias will check fan coils

installation of pressurized air, water, waste water system

- ▶ funds not yet secured – needed soon!

floorplan - baseline



14:30 – 14:40 Coordination electronic readout chain development & tests

- ▶ joint effort to test PZ-0 with p-type crystal at Milano!

14:40 – 15:30 Installation issues – immediate

- ▶ cryostat works sequence: Rn emanation test, He leak test?, evaporation test, further cleaning if needed, copper plate mounting, Rn emanation test, further cleaning if needed

needs during GERDA construction period

- power, 2-, 3-phase, adaptors, compressed air ▶ ok
- clean air (Rn-reduced, dust-free) ▶ check by Stefano
- cherry picker ▶ rent one (MJ), reserve one (SG)
- oxygen monitor ▶ buy one more device
- hard shoes/hats ▶ to be supplied individually
- general safety ▶ organize safety course for GERDA

15:30 – 16:00 Installation issues – near future

parallel?! installation of clean room, lock & cryogenics
& muon veto & ... ▶ detailed schedule needed
▶ start immediately to identify various competing activities,
including logistics & number of people involved

muon scintillators ▶ to be stored on roof while still open!
VM2000 reflective foil to be glued directly on WT walls
▶ test needed to exclude clogging during water drainage!
cryogenic supply tubes ▶ funds not yet secured – HD?
reservation of storage space ▶ MJ ((SG))
final Rn emanation test ▶ procedure to be defined !

Thank you for your excellent cooperation!

**Please carry the great spirit of this meeting into
the exciting months ahead of us!**