

GERDA

Integration & Schedules

K.T.Knöpfle
MPI Kernphysik, Heidelberg
ktno@mpi-hd.mpg.de

GERDA Collaboration Meeting at Ringberg
12 – 14 February 2007

Integration Issues

- Superstructure

HEB700, IPE120 beams positions
dto lowest edge of lock / shutter
floor cut-out of ss
damped ? fixation of lock on ss
required precision of fixation of lock
▶ 2 cm in x & y (horizontally)
access to manifold
transport cart(s) to manifold

- Cryostat

final height
template ▶ ordered at HD
interface to WT ▶ done
mounting of PMTs ▶ info by next week
mounting of reflector foil ▶ dto
protection during WT building ▶ yes

- Water Tank

final diameter of hole in WT's roof ▶ Ø1900
final height ▶ by next week
interface to cryostat ▶ done
gas-proof connection WT – cryostat
who is responsible? ▶ design MPI HD
final decision on heater for exh. Gas
▶ heat exchanger within WT
who will implement that? ▶ MPI HD

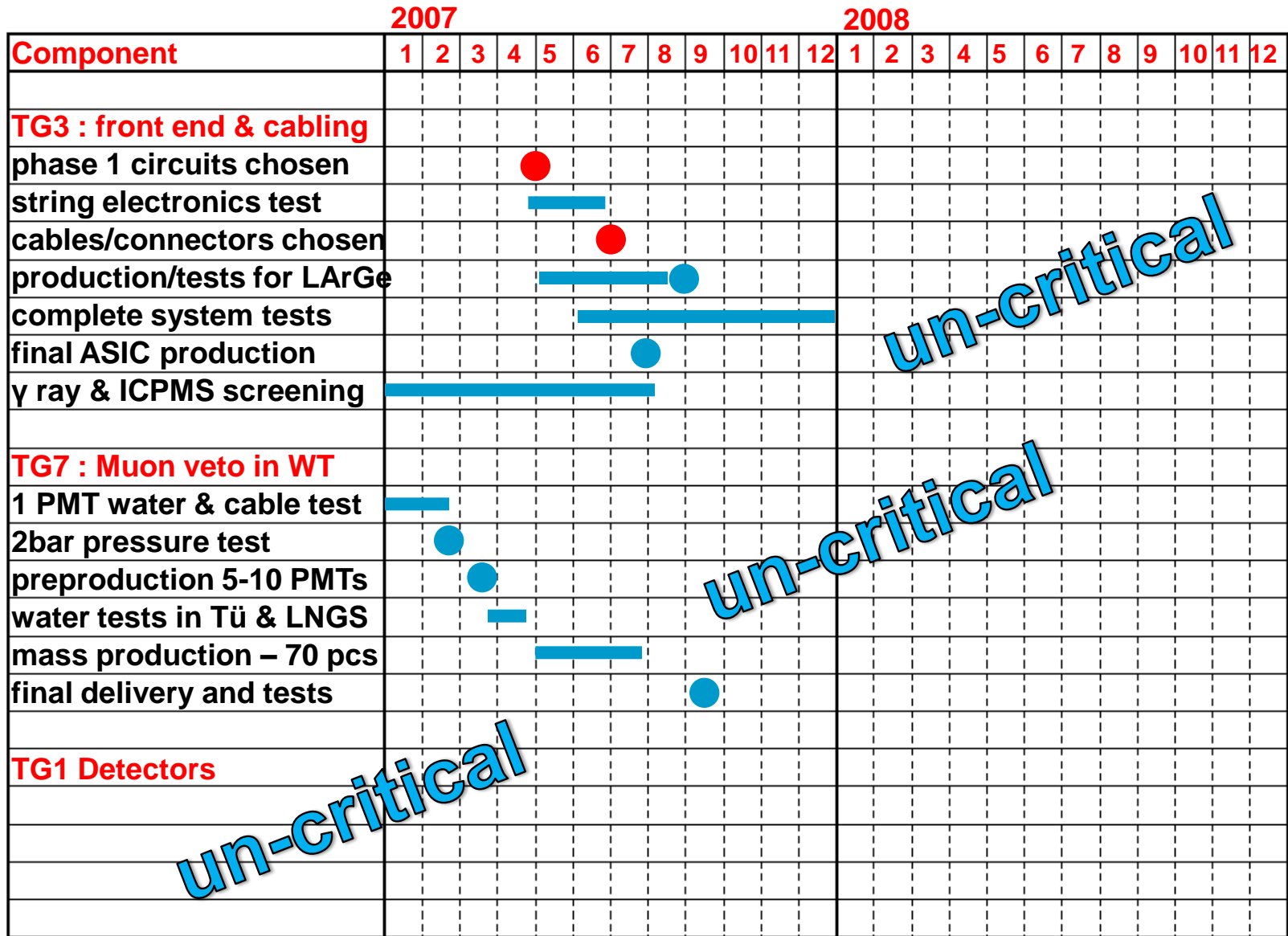
- Exhaust gas tubes, cryogenic lines, cables,...

plan including ▶ meeting at LNGS
a) fixations
b) feedthrus for cables cleanroom – electr.
c) feedthrus for pipes cleanroom – cryo infra
d) connection to LNGS ventilation
d) shall we use halogen-free cables?

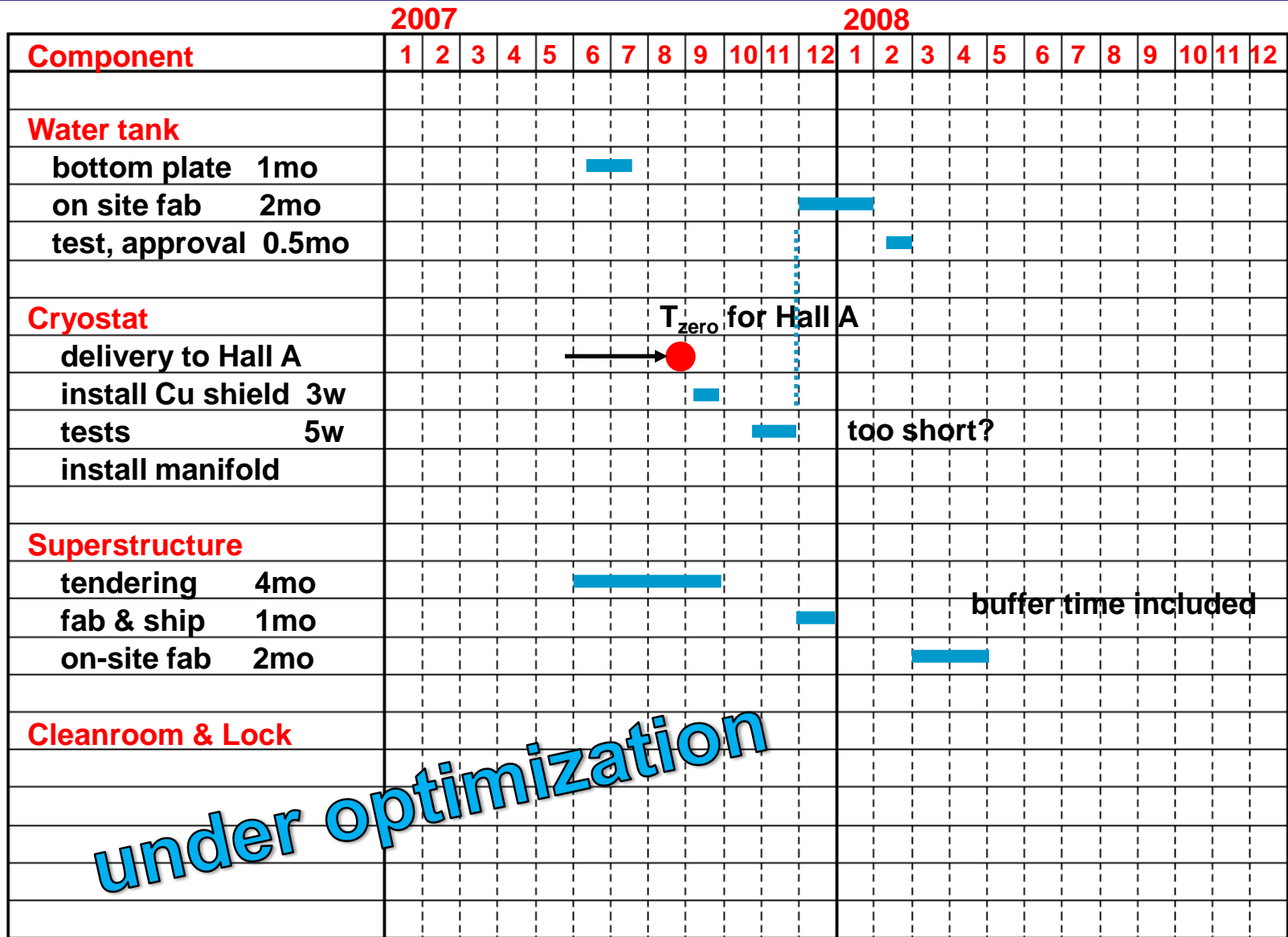
Integration Issues

- Faraday cage room for electronics with very stable air conditioning & water cooling concept ▶ **no Faraday cage room necessary**
who will take responsibility for designing ▶ **C&B** / building it ▶ **MPI Mu?**
- Final decision on grounding scheme and its implication for isolation of
▶ **no isolation of cryostat etc, but isolation of all electric lines including ground**
- Cables for phase 1 (phase 2 ?) detectors
- Installations needed already this year at GERDA site for cryostat tests
electrical, pressurized air, LN2 storage, scaffolding, ... ▶ **all but LN2 available**
wall in front of LVD? ▶ **to be handled by LNGS**
- Coverage of Superstructure tender: ▶ **steel structure, walls, doors, floors,..**
What will we need in addition ? ▶ **all the rest**
- Concept / location of LN2 and LAr 5.0 (~~6.0?~~) storage tanks
▶ **integral concept for GERDA/DetLab needed; location not yet defined**
- Radon reduction unit ▶ **different judgements, decision postponed**

TG 3 & 7 Time Schedule as of Feb 07



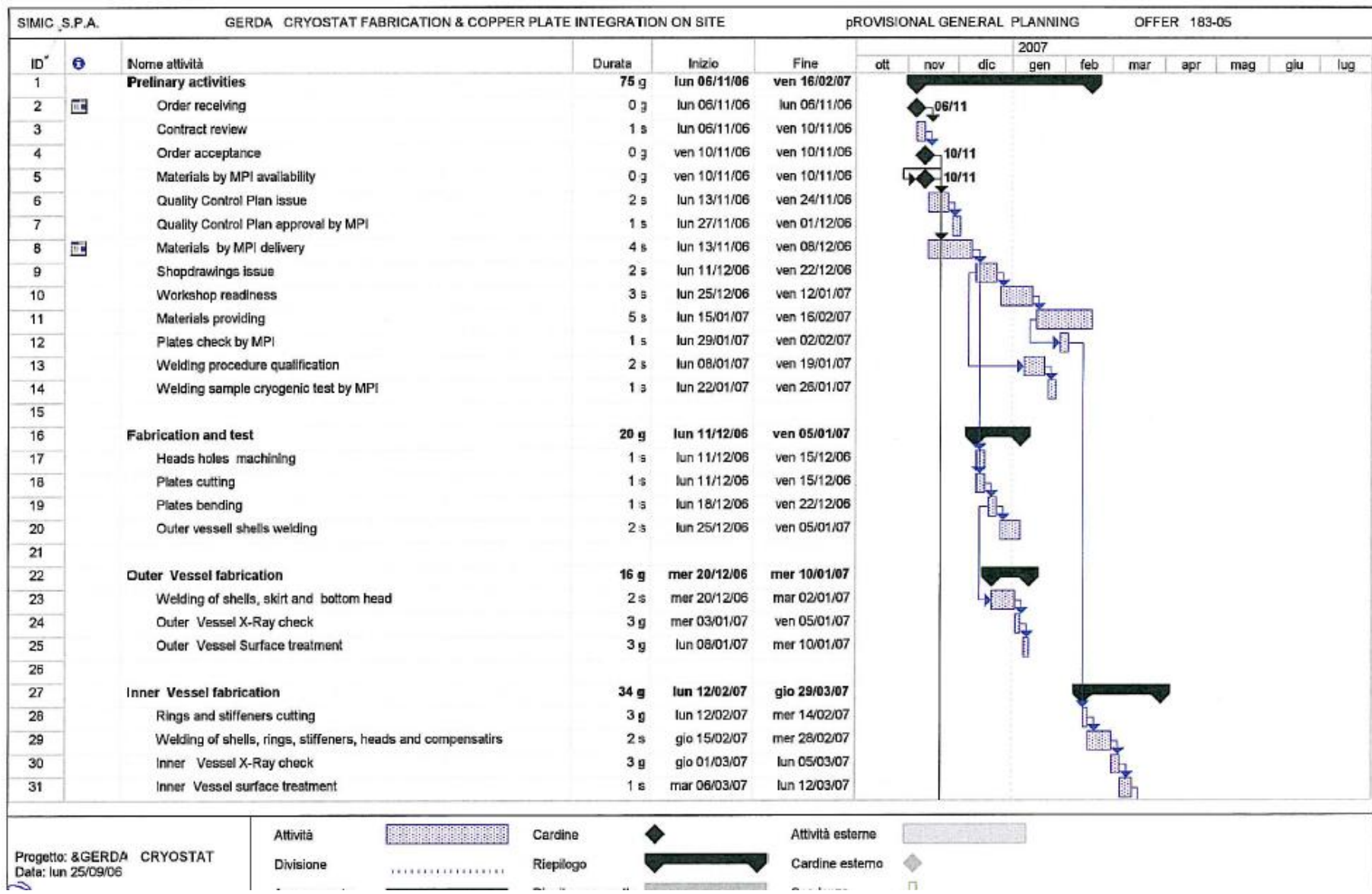
Feb 07 Time Schedule Projection for Works in Hall A



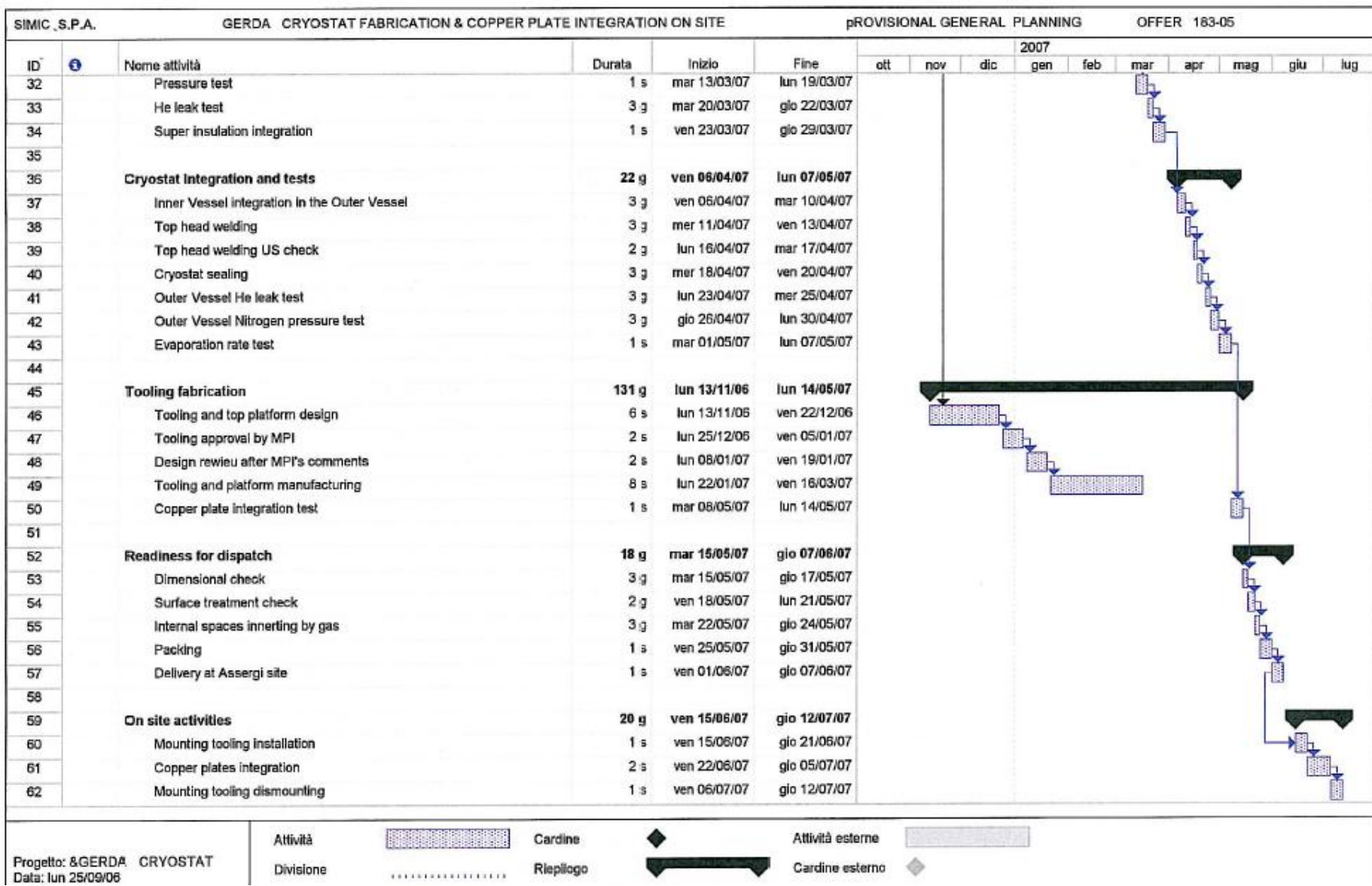
Conclusions

- very effective integration and schedule session
 thanks to all participants !!
- schedule not yet well predictable, T0 = cryostat delivery
 - ▶ vesselhead delivery now shifted to the end of Feb....
 delayed by almost 3 months
 - ▶ hope that cleanroom / lock installation schedule can
 compensate for some lost time!

SIMIC Time Schedule (1)



SIMIC Time Schedule (2)



Progetto: &GERDA CRYOSTAT
Data: lun 25/09/06

Attività Cardine Attività esterne
Divisione Rispliego Cardine esterno