



Commissioning Lock: Status

- **Installation of last parts being finished today: flexible tubes, support of gas system, motor for string movements.**
- **First warm test run planned for today/tomorrow: close lock, pump, flush, move string.**
- **URGENT test: try to lower string into dewar with dummy detectors. How difficult is it to hit the walls with the detector? (test maybe today?)**



- Shutter 1
- Cable string
- Vertical tube with bellow
- Pogopin matrix and sled with flex contact
- Dummy detectors
- Shutter 2 not visible (below seal)



Commissioning Lock: String Movement

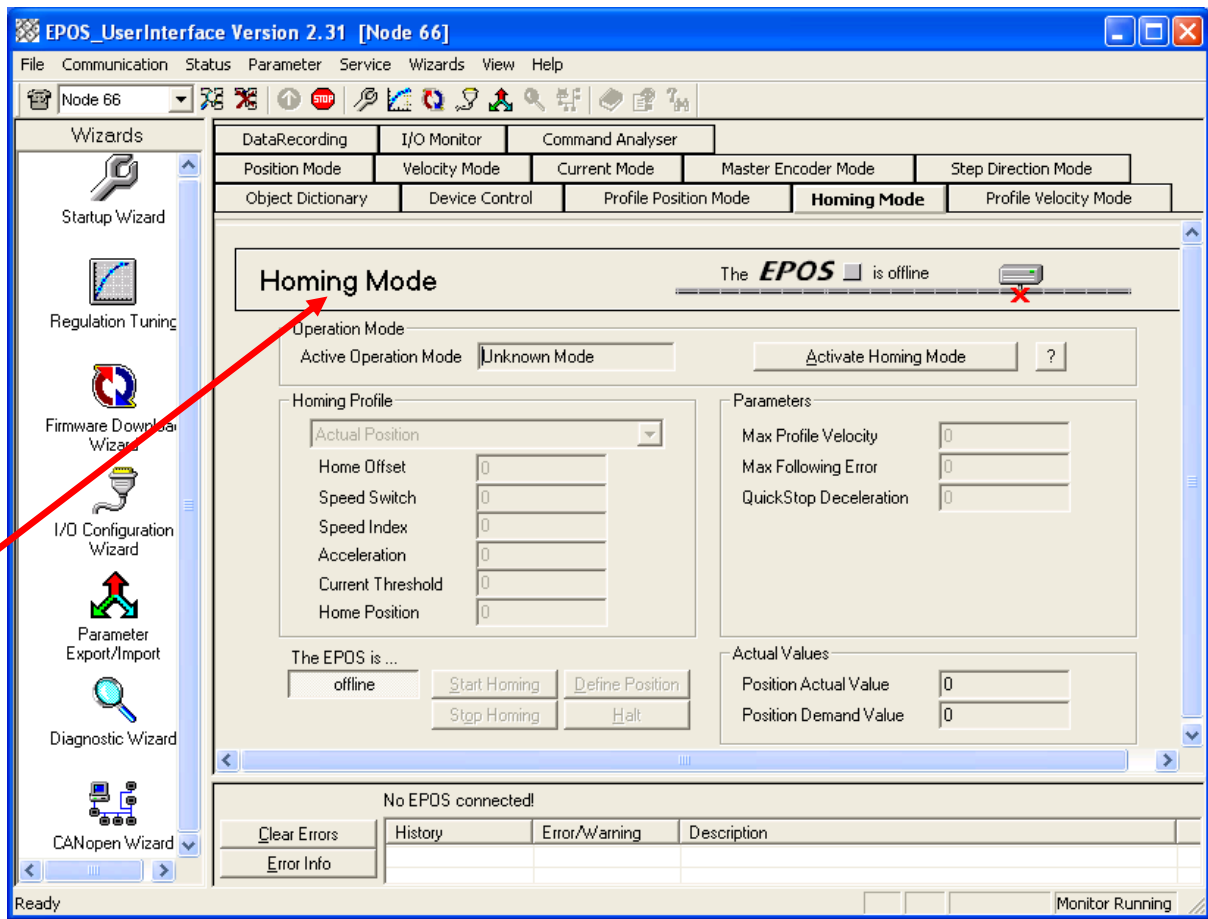
Once the motor is attached:
It is easy to move string up
and down:

Use controller with software:

User: admin

PWD: idegs

Homing Mode to define
reference.





Commissioning Lock: String Movement

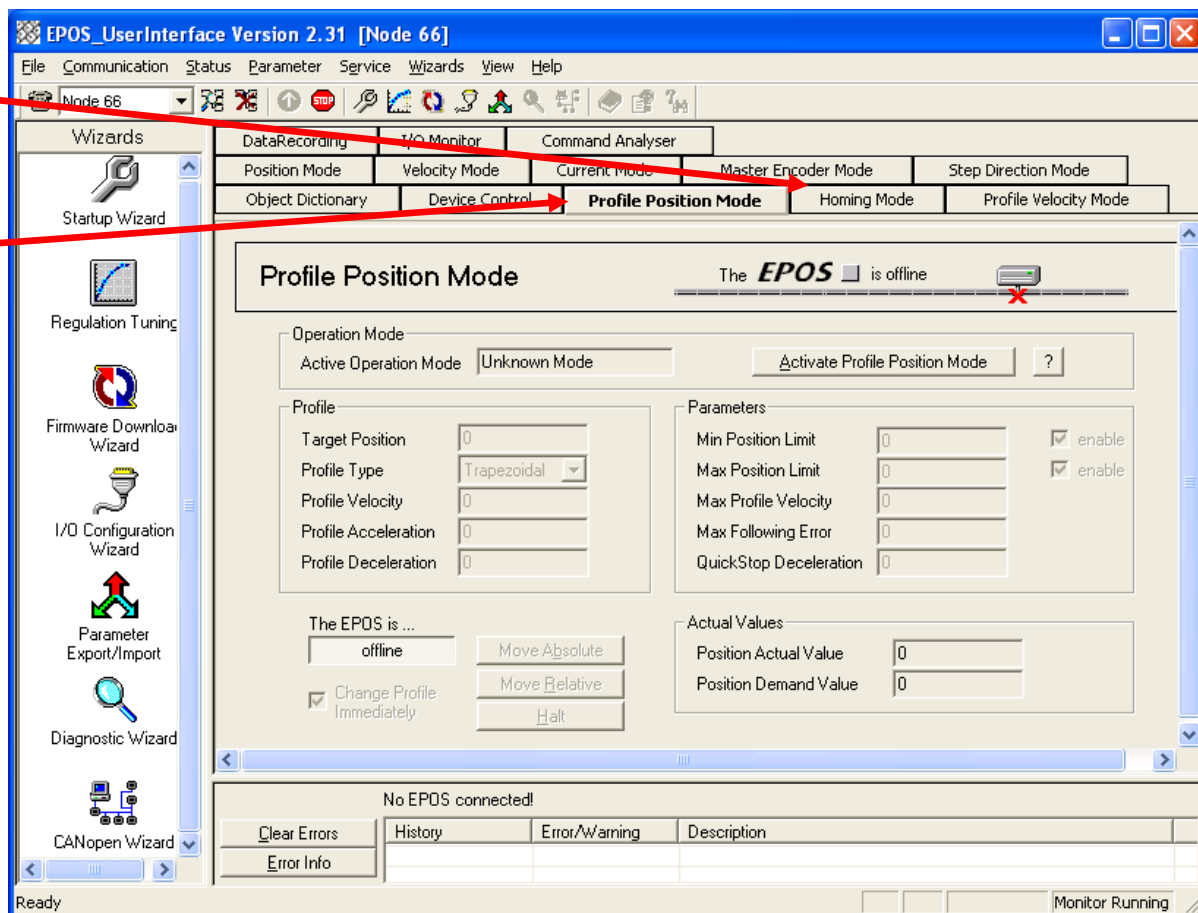
- Homing Mode to define reference.
- Profile Position mode to move string.

Short write up available

Still to be done: Measure distances, translate to quads

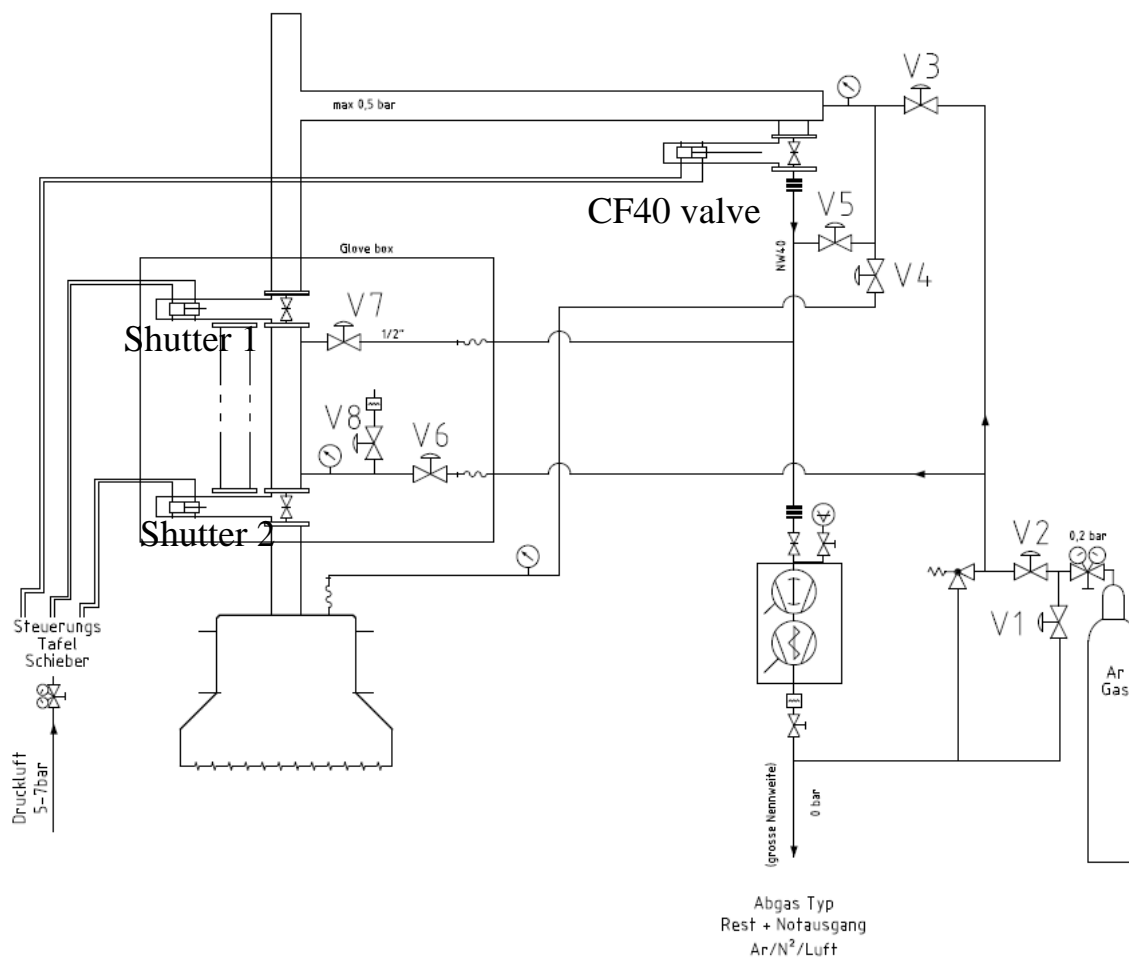
5.000.000 quads = 1m

Direction given by sign





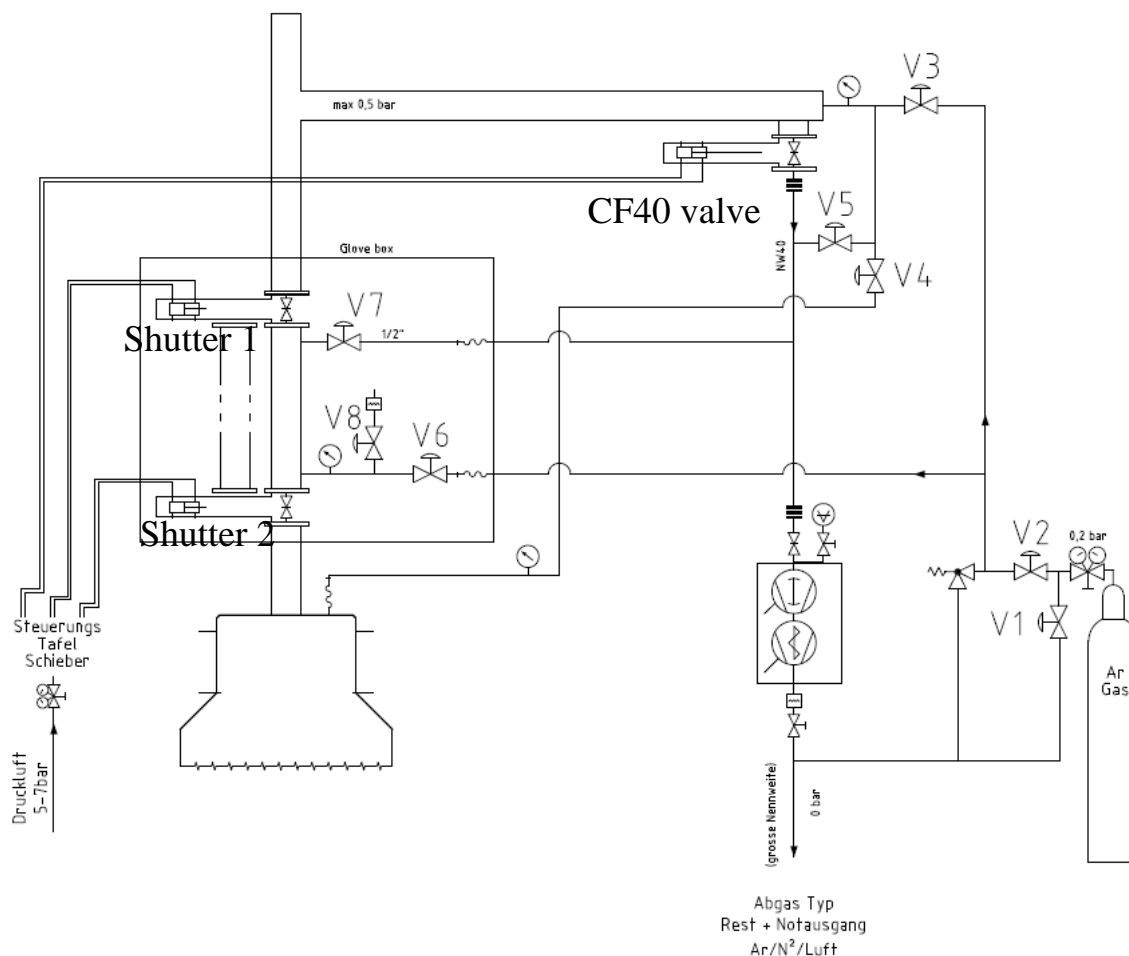
Commissioning Lock: HdM gas system



Prepare first service:

- Cryostat installed and filled with LAr.
~100mbar overpressure
- Connect gas bottle
- String in parking position with dummy detectors
- Close all valves and shutters
- Flush connection piece: Open V1, open gas, flush, close V1, Close bottle
- Pump commissioning lock volume: Open V3, open CF40 valve, start pump, close CF40 valve, stop pump
- Purge commissioning lock volume: Open gas bottle, open V2, close V3, Close V2
- Purge pump: open V1, close V1
- Pressure release commissioning lock volume: open V6 until pressure equalized

Commissioning Lock: HdM gas system

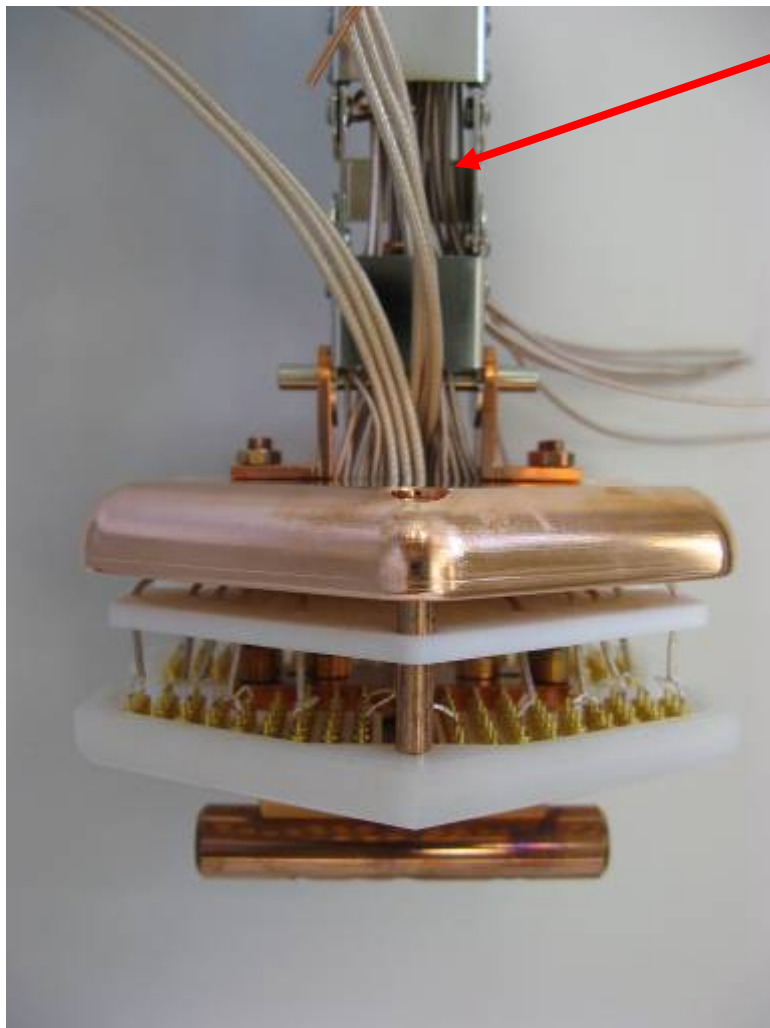


Detector installation:

- Cryostat installed and filled with LAr.
~100mbar overpressure
- First service procedure
- String in parking position with dummy detectors
- All valves and shutters closed
- Open shutter 1
- Bring string to mounting position
- Mount detectors
- Bring detectors to parking position
- Close shutter 1
- Attach vertical tube with bellow
- Attach gas tubes to vertical tube with bellow
- Pump vertical tube: Open V7, start pump, Close V7, stop pump
- Flush vertical tube: open gas bottle, open V2, open V6, close V6, close V2
- Pressure equalization horizontal arm, vertical tube: Open V7, open V5, Open Shutter 1
- Pressure equalization lock-cryostat: Open V4, close V4



Cable Chain - Grounding



HV cable:

