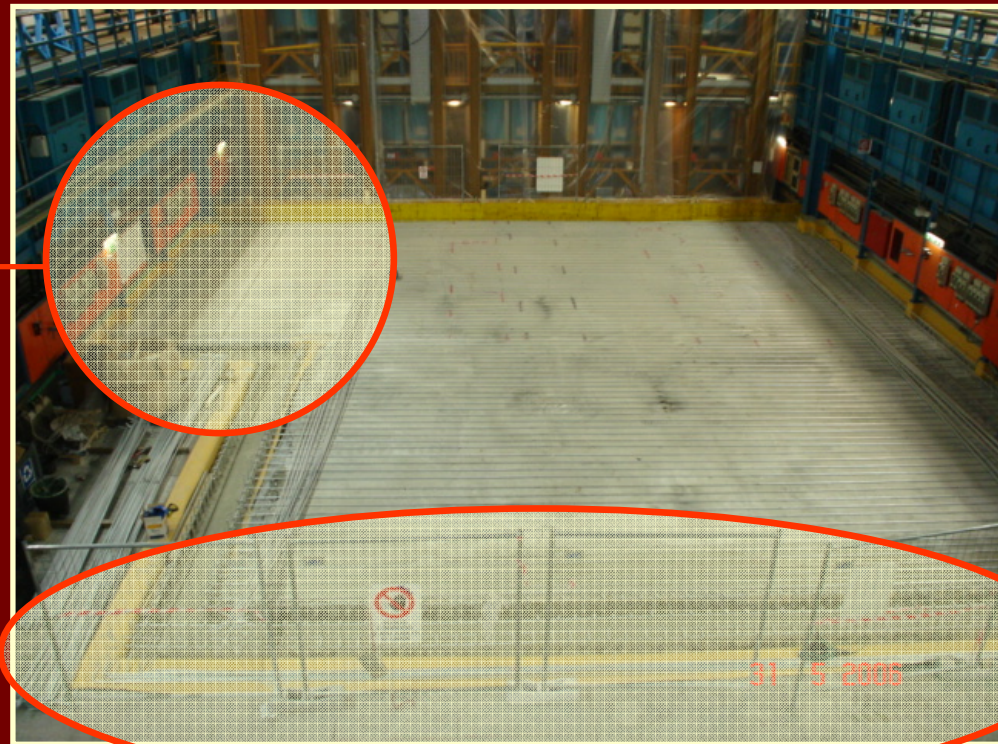


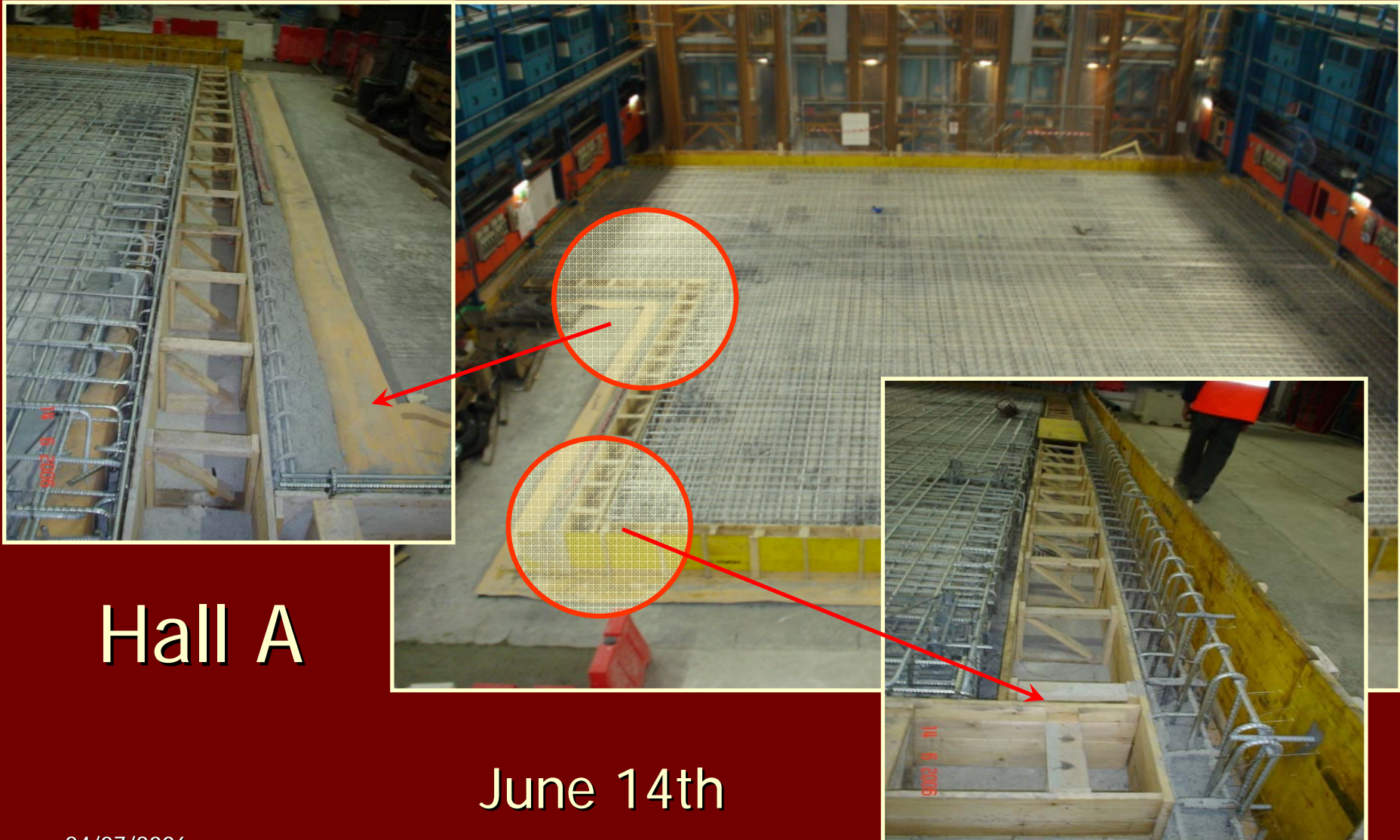
GERDA

Superstructure and System Integration

Hall A

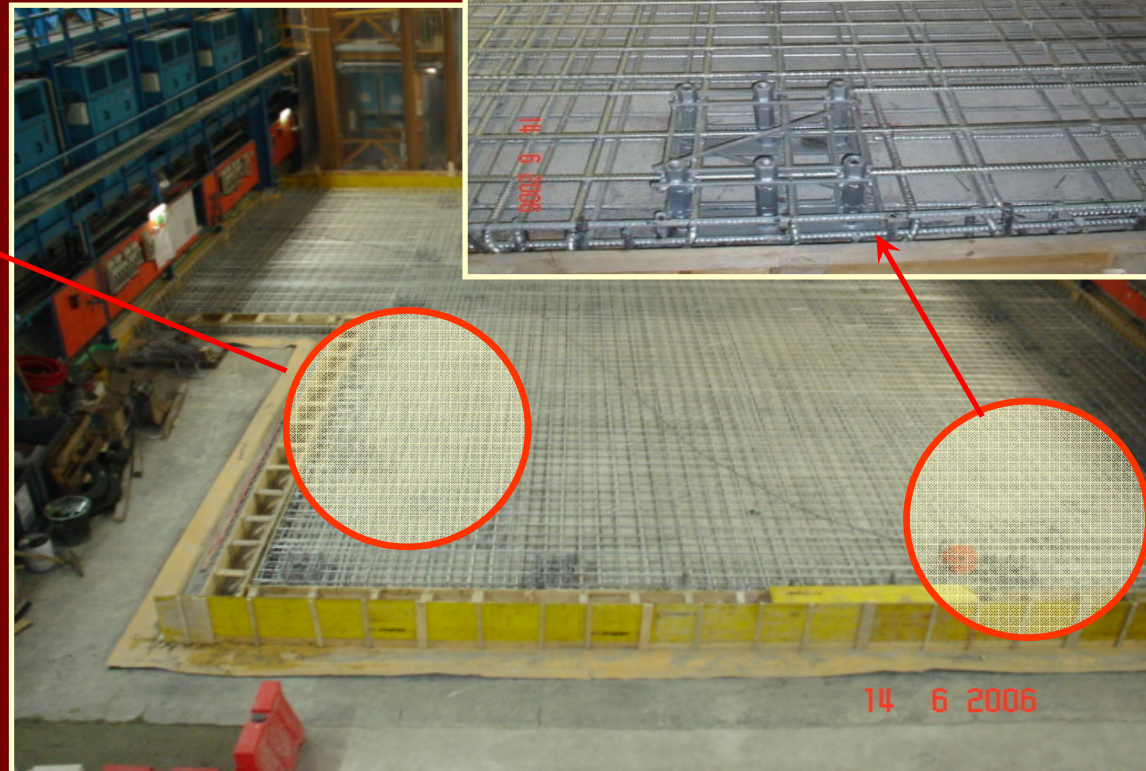


May 31st



Hall A

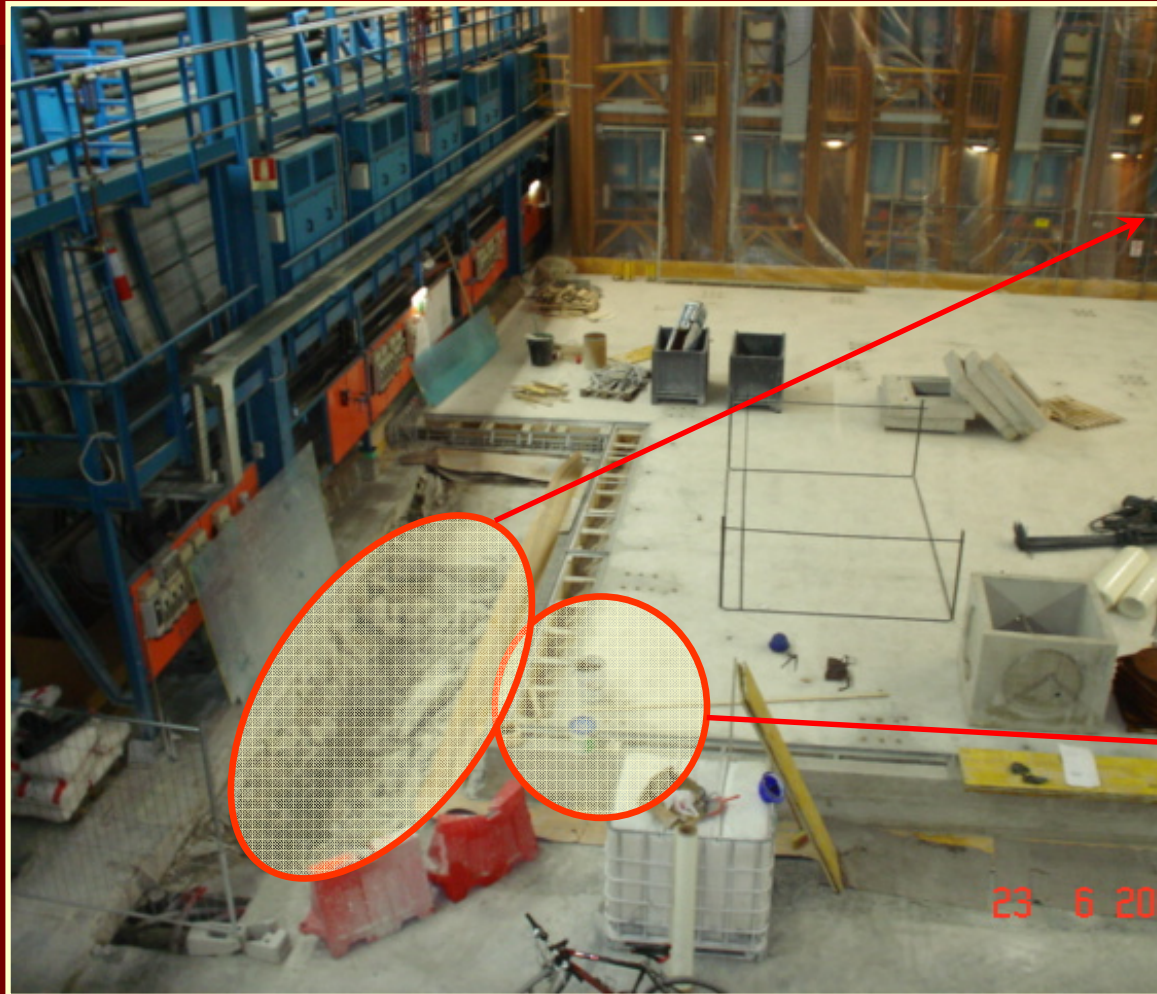
Hall A

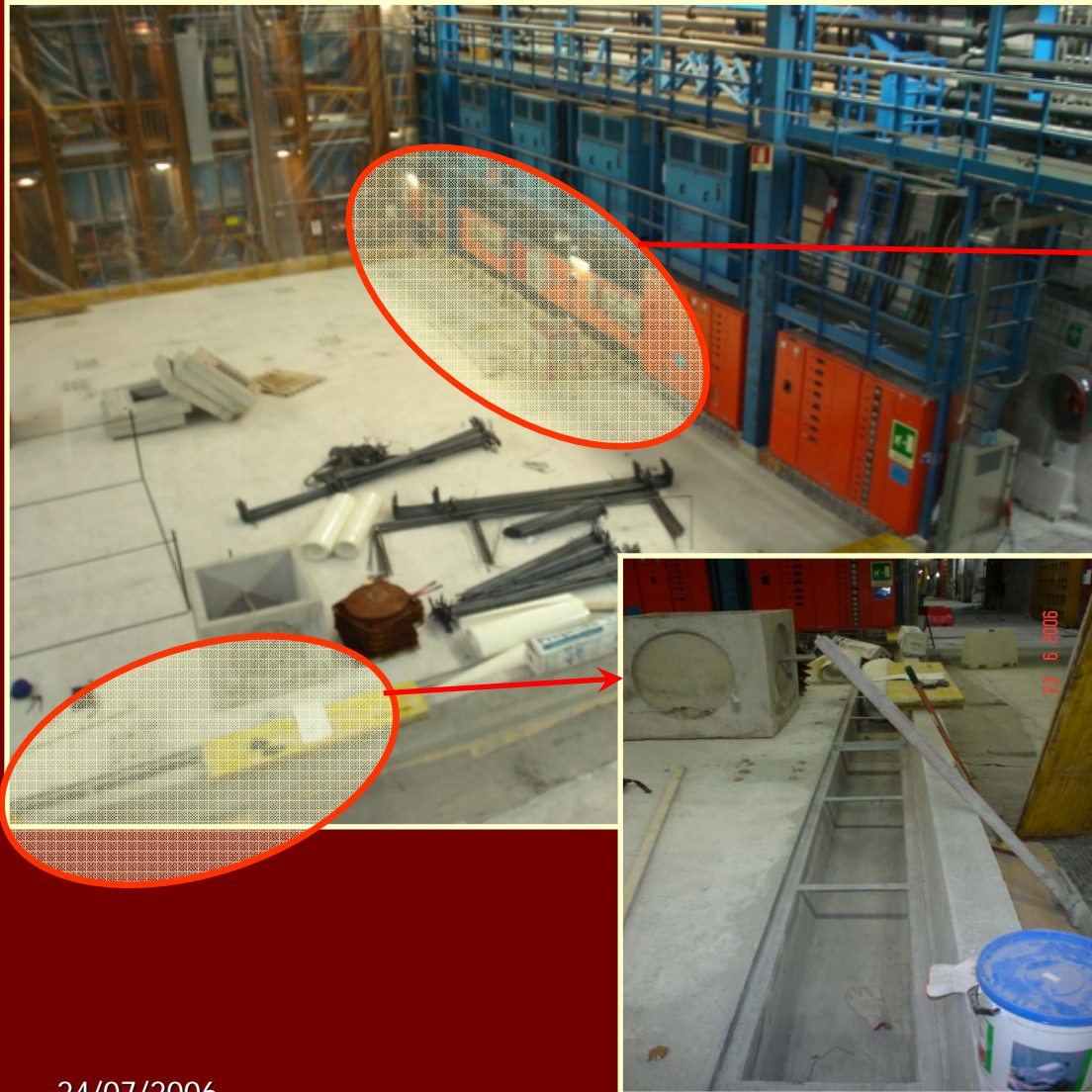


June 14th

24/07/2006

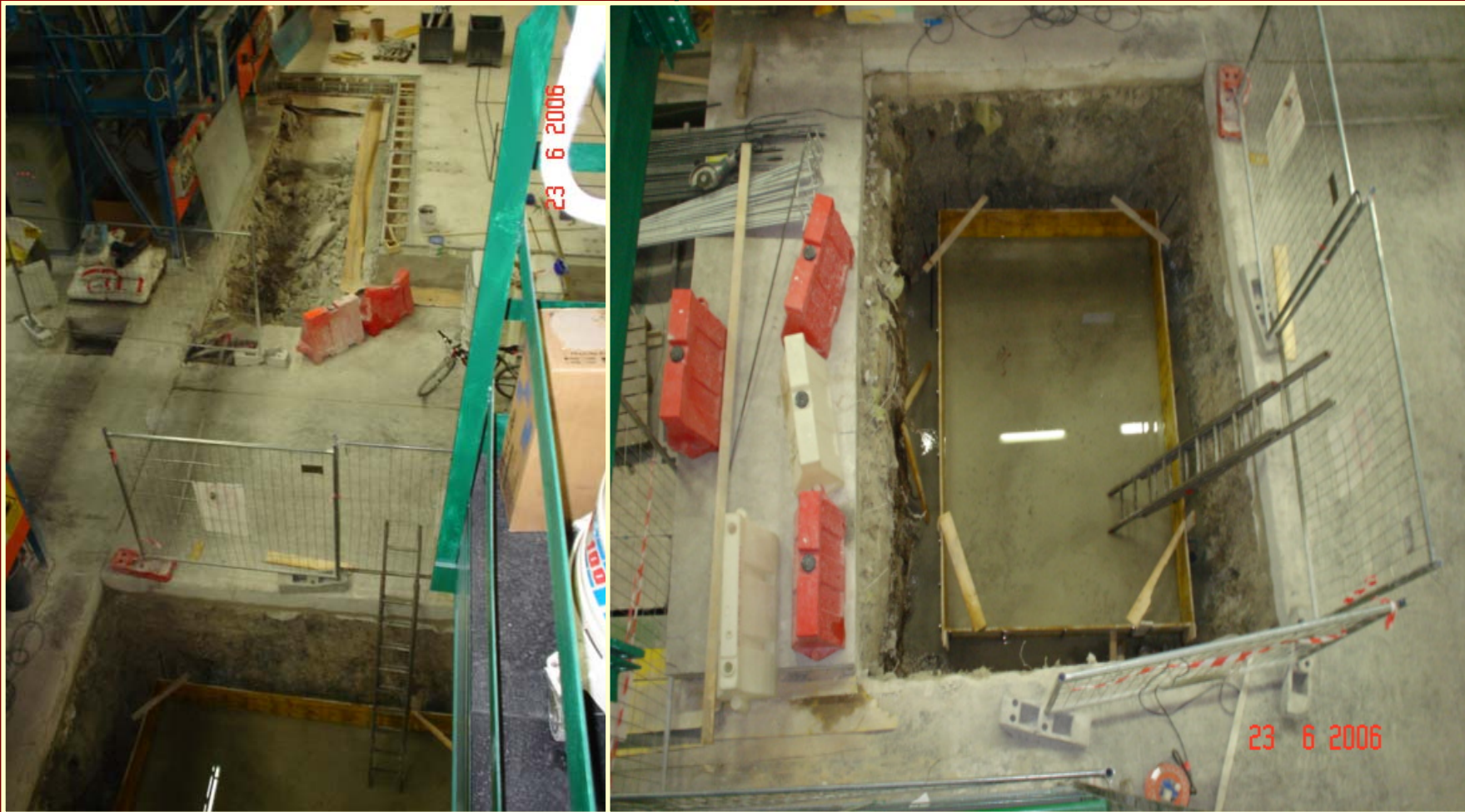
Hall A, June 23rd





Hall A
June 23rd

Hall A, June 23rd



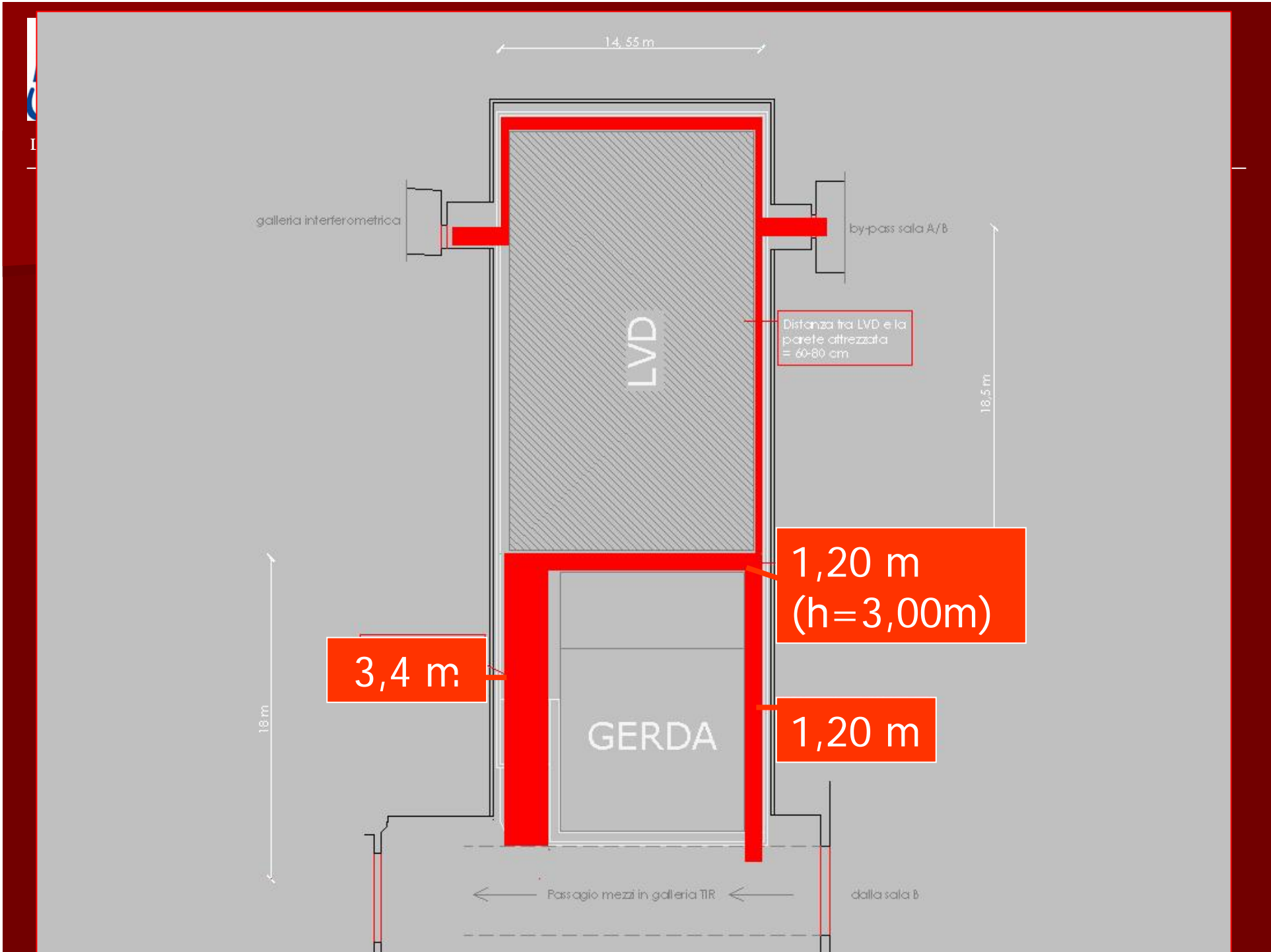
24/07/2006

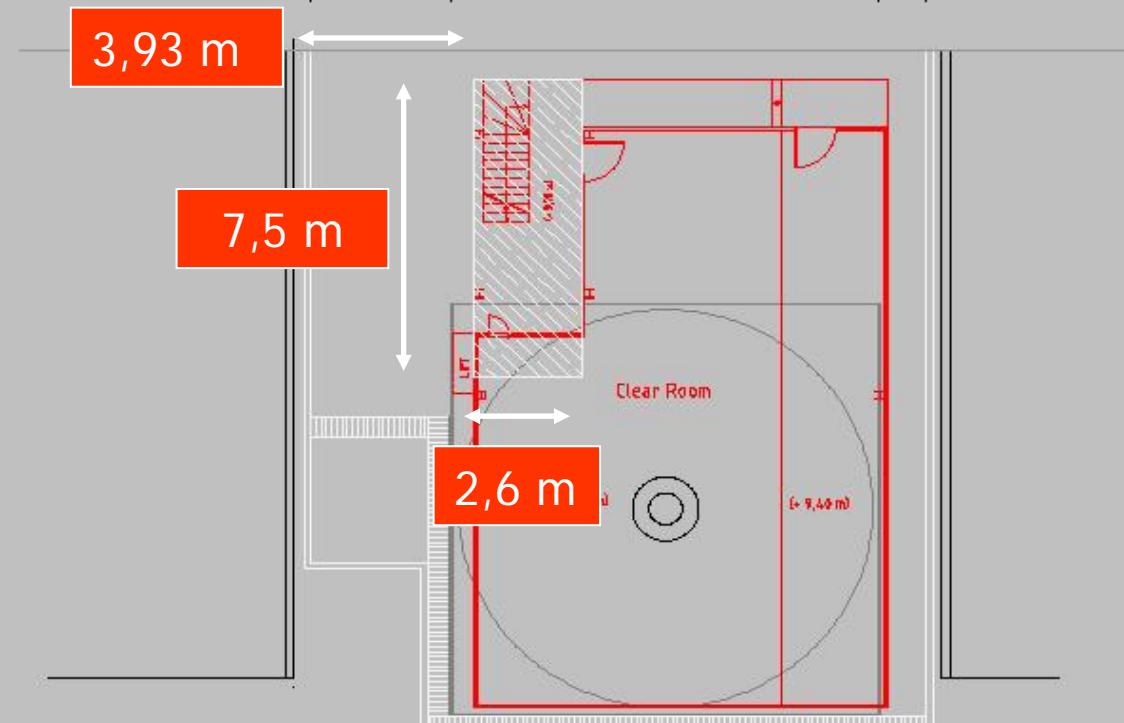
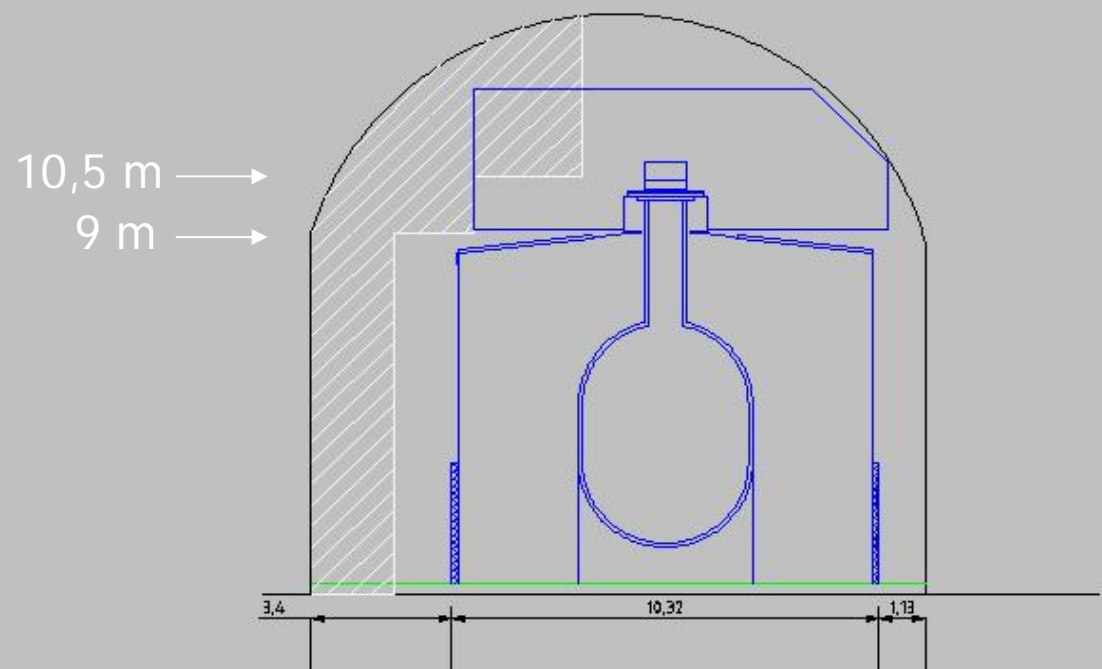
GERDA positioning

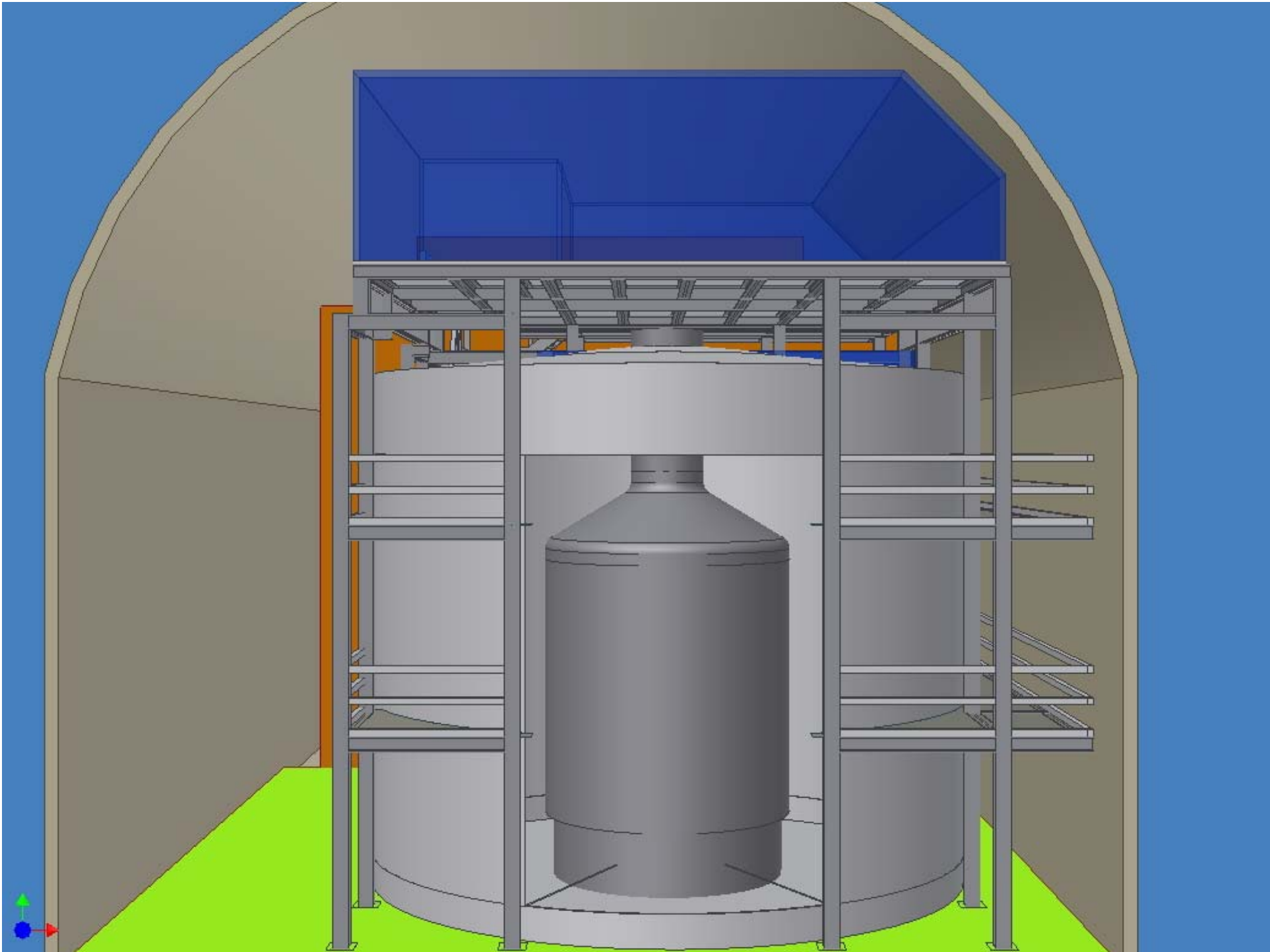
The building has to
comply 2 constraints

Space for
Emergency Exit

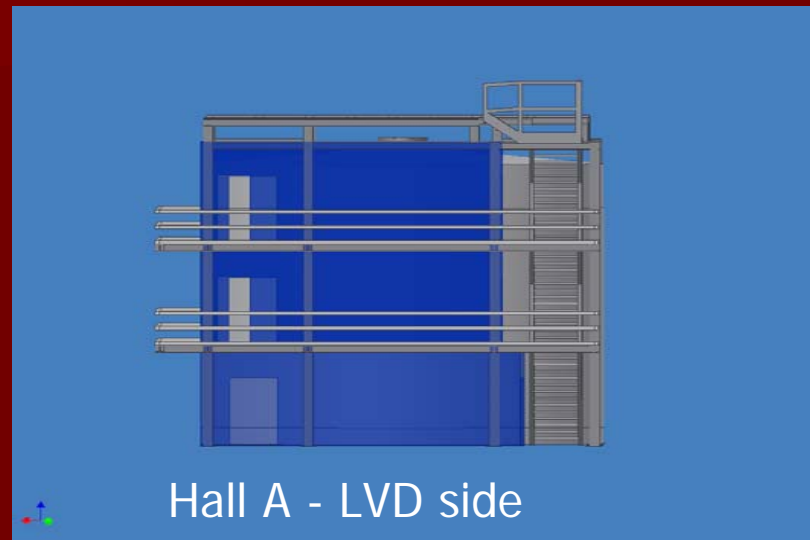
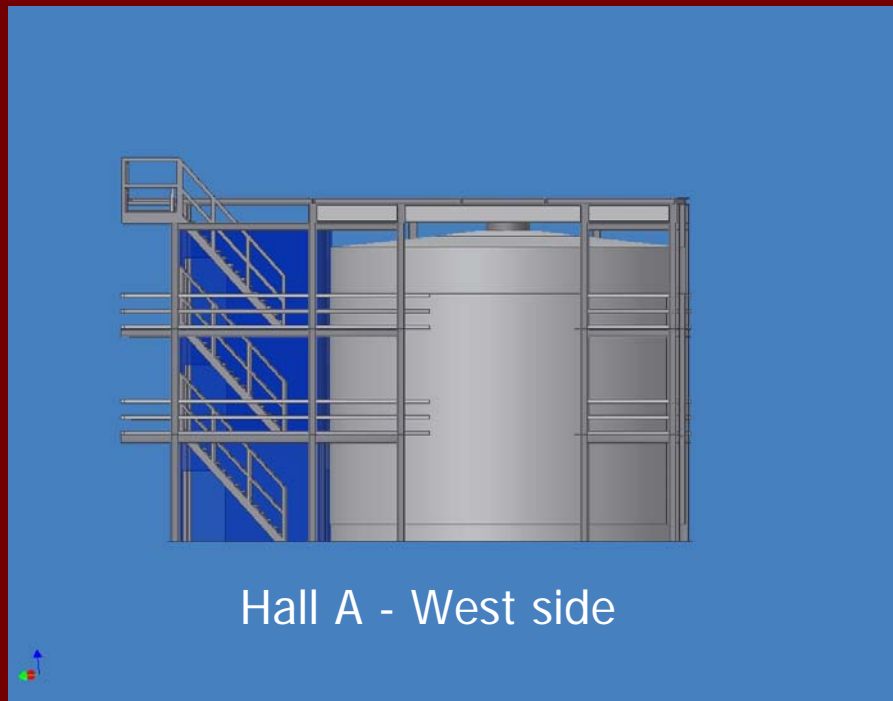
Space for LVD
(dismantling)



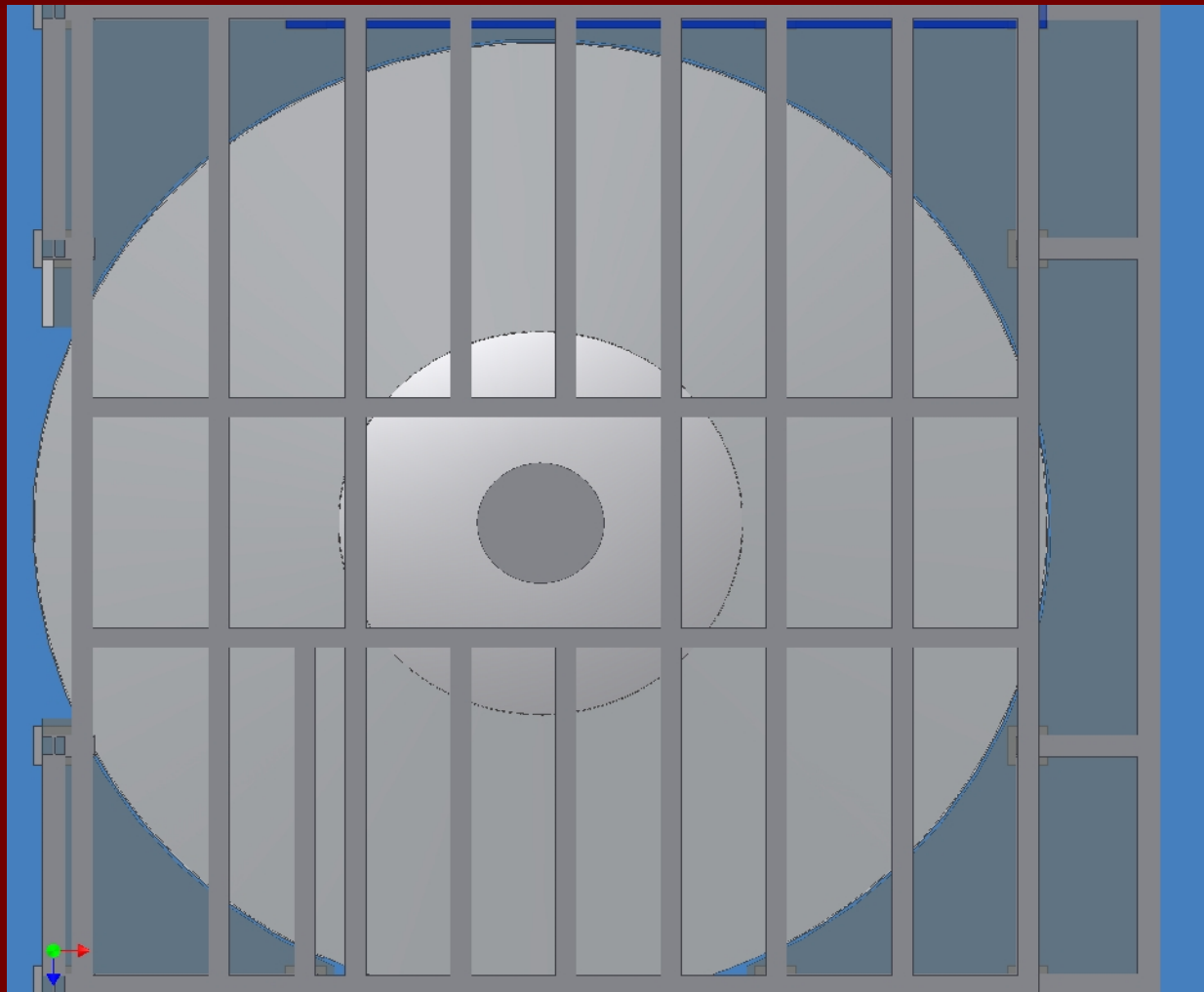




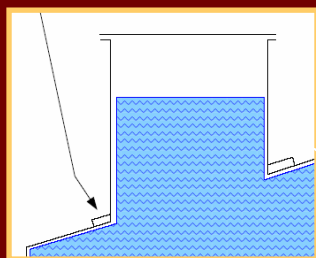
Views of GERDA SuperStructure 3D



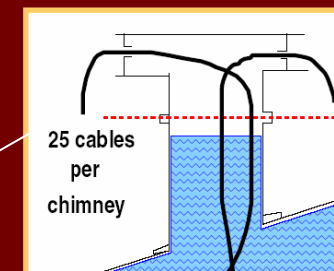
The Platform



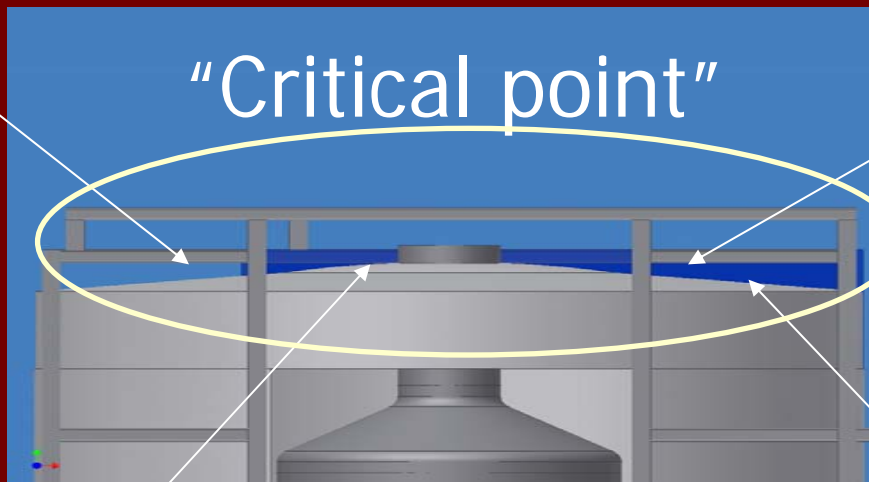
Emergency access



Chimneys for Cables



"Critical point"



Cryogenic connection

Control System for
Water Loop



System Integration

Position of chimneys and any possible connections between the top of the tank and the penthouse floor

**Evaluation of
Space available & Interferences**